



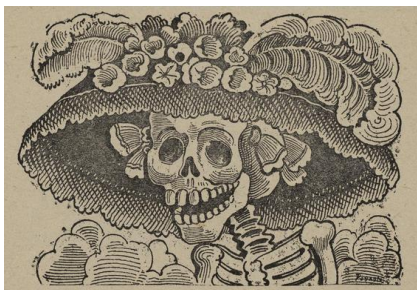
## Palm Springs Art Museum Celebrates Day of the Dead/ Día de los muertos

### Two Celebrations Planned, Palm Springs and Palm Desert

**PALM SPRINGS (Oct. 8, 2014)** – Join the *Day of the Dead* celebrations on October 25 from 10:30 a.m. to 4:00 p.m. at Palm Springs Art Museum and again on November 1 from 10:00 a.m. to 2:00 p.m. at Palm Springs Art Museum in Palm Desert, The Galen and the Faye Sarkowsky Sculpture Garden. *Day of the Dead* celebrates the continuance of life, family relationships, and community solidarity while finding humor after death. Traditional cultural activities planned include contemporary altar installations, music by Mariachi Azteca de Oro de Jose Valdez, a performance by the Danza Azteca Citlaltonac Tierra dancers, a special *Day of the Dead* quilt exhibition, art activities, and more.

### October 25 Palm Springs Art Museum Schedule of Activities

All festivities will take place at 101 Museum Drive, with an opening procession by the Danza Azteca Citlaltonac Tierra dancers at 10:30 a.m. Performances by Mariachi Azteca de Oro de Jose Valdez will begin at 11:00 a.m. and continue throughout the day. At 1:00 and 3:30 p.m. guests will enjoy a special performance by Ballet Folklórico Sabor a mi Tierra. Families can engage in art activities including mask making, creating paper flowers, papel picado (cut-paper banners), skull magnets, and printmaking based on the iconic imagery of Posada, all day long.



José Guadalupe Posada, *Calavera de la Catrina (Skull of the Fancy Lady)*

Opening October 2 and continuing through November 2, a special quilt exhibition, featuring quilts by ten Coachella Valley Quilt Guild members, is on display. These quilts were produced in January 2011 for the show, *Road to California*. Some are based on the book, *Calavera Abecedario: A Day of the Dead Alphabet Book*, by Jeanette Winter. With the author's permission, the illustrations were an inspiration to the quilters. Others represent the quilt makers' own lives and experiences, created with *Day of the Dead* imagery.



Day of the Dead quilt inspired by *Calavera Abecedario: A Day of the Dead Alphabet Book*, by Jeanette Winter.

A significant tradition of *Day of the Dead* is an altar created in honor of a loved one. Ten local artists are installing altars on October 18<sup>th</sup> to prepare for the celebration on the 25<sup>th</sup>. Attendees are invited to bring a memento on the 25<sup>th</sup> to add to the community altar that will be located in the front of the museum. In addition, they are encouraged to participate in the Catrina Costume Contest which will take place at 2 p.m. on the main level of the museum. For more information visit [www.mychicatopia.com/coachella](http://www.mychicatopia.com/coachella).

### **November 1 Palm Springs Art Museum in Palm Desert Schedule of Activities**

Located at 72-567 Highway 111 in Palm Desert, attendees can see a live sugar skull demonstration by Gloria Maldonado, listen to music by Mariachi Azteca de Oro de Jose Valdez, and visit installations throughout the Faye Sarkowsky Sculpture Garden and the Annette Bloch Education Wing. Activities include creating paper flowers and skull magnets. The museum encourages attendees to remember a loved one by leaving a memento on the community altar.

Admission to both events is free. For more information visit [www.psmuseum.org](http://www.psmuseum.org) or call Palm Springs Art Museum at (760) 322-4884, or Palm Springs Art Museum in Palm Desert at (760) 346-5600. Palm Springs Art Museum *Day of the Dead* is made possible by U.S. Bank and Palm Springs Art Museum Board of Trustees members Donna MacMillan, Harold B. Matzner, Harold J. Meyerman, Loren G. Lipson, MD, and Leticia Quezada.

Palm Springs Art Museum in Palm Desert is also partnering with Sunnylands Center & Gardens, and Raices Cultura on the Dias de los Muertos celebration. Various activities will be hosted by each organization beginning on October 29 at Sunnylands, [www.sunnylands.org](http://www.sunnylands.org), and ending the evening of November 1 with the 2<sup>nd</sup> annual *Run With Los Muertos*, hosted by Raices Cultura in downtown Coachella, [www.runwithlosmuertos.com](http://www.runwithlosmuertos.com).

### **About the Palm Springs Art Museum**

Palm Springs Art Museum is the largest cultural institution in the Coachella Valley and includes three locations in Palm Springs and Palm Desert. The flagship building is located in downtown Palm Springs and features compelling art exhibitions and a vast permanent collection, all on view in a 150,000 square foot, architecturally-significant building. The soon-to-open Palm Springs Art Museum Architecture and Design Center, Edwards Harris Pavilion will feature exhibitions and programming that explore the rich topics of architecture and design. Palm Springs Art Museum in Palm Desert is an 8,400 square foot, Silver LEED-certified building named The Galen that presents rotating exhibitions and special collections. It is surrounded by the four-acre Faye Sarkowsky Sculpture Garden featuring important sculpture works. For more information, call 760-322-4800, visit [www.psmuseum.org](http://www.psmuseum.org), and follow the Museum on Facebook, Twitter and InstaGram.

# # #